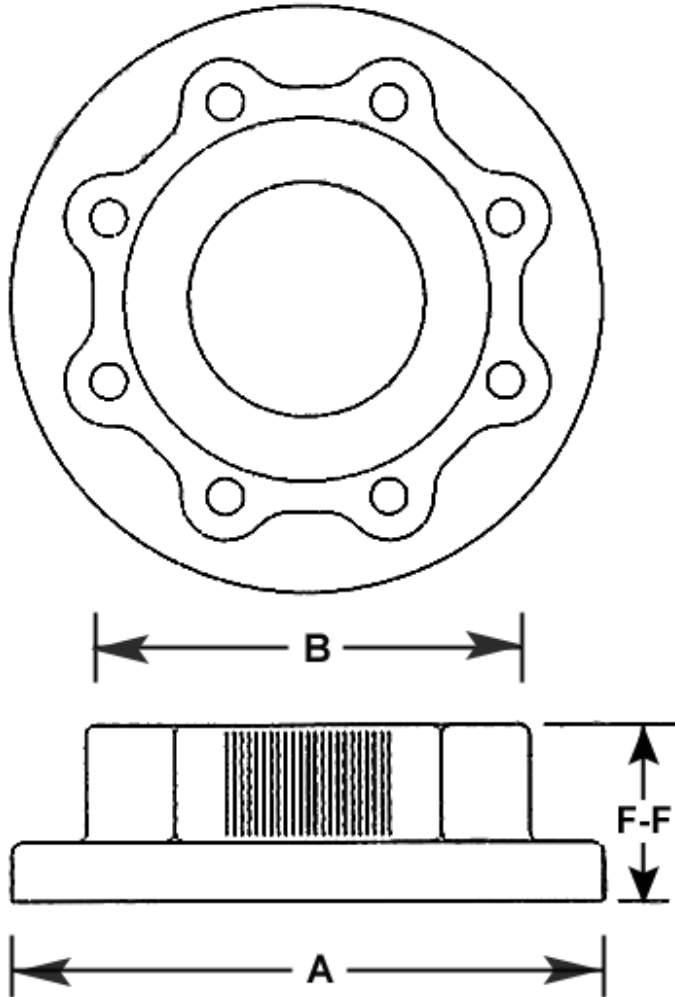


**PRODUCT DESCRIPTION**

**FLANGE ADAPTERS** are designed to connect larger or smaller flanged piping components together in a minimum face to face dimension. They have tapped holes for connection to 125# ANSI mating flanges using cap screws or studs and nuts of the size specified for the mating flange. They are particularly advantageous in limited spaces such as equipment rooms and frame mounted packages for interconnection of valves, fittings, strainers, and flexible connectors.



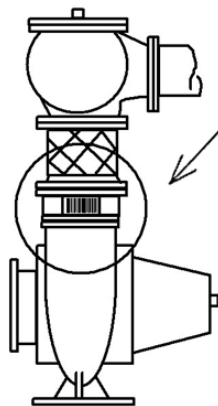
**Material:** Cast Iron (CL B min)

**Working Pressure:** Complies with ANSI B16.1 for class 125 fittings

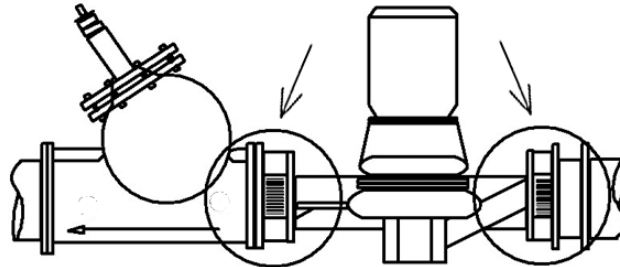
<b>Model</b>	<b>A 125# FLG</b>	<b>B 125# FLG</b>	<b>F-F In</b>
FCC3025	3	2-1/2	2-1/2
FCC4025	4	2-12	2-1/2
FCC4030	4	3	2-1/2
FCC5030	5	3	3-1/2
FCC5040	5	4	3
FCC6040	6	4	3-1/2
FCC6050	6	5	3
FCC8050	8	5	3-1/2
FCC8060	8	6	3-1/2
FCC1080	10	8	3-1/2
FCC1210	12	10	3-1/2
FCC1412	14	12	3-1/2

<b>Flange</b>			<b>Cap Screws</b>	
<b>Size</b>	<b>Thickness In</b>	<b>QTY.</b>	<b>Size</b>	<b>Length In</b>
2--1/2	11/16	4	5/8-11	2
2--1/2	1	4	5/8-11	2-1/4
3	3/4	4	5/8-11	2
3	1-1/8	4	5/8-11	2-1/4
4	1-5/16	8	5/8-11	2
4	1-1/4	8	5/8-11	2-1/2
5	1-5/16	8	3/4-10	2-1/4
5	1-3/8	8	3/4-10	2-3/4
6	1	8	3/4-10	2-1/4
6	1-7/16	8	3/4-10	2-3/4
8	1-1/8	8	3/4-10	2-1/2
8	1-5/8	8	3/4-10	3
10	1-3/16	12	7/8-9	2-3/4
10	1-7/8	12	7/8-9	3-1/2
12	1-1/4	12	7/8-9	2-3/4
12	2	12	7/8-9	3-1/2
14	1-3/8	12	1-8	3
14	2-1/8	12	1-8	3-3/4

Low Tensile-A307 Grade B Cap Screws Required for Connection to Mating ANSI Flange with 1/8" Resilient Gasket.



6" Triple Duty Valve and Flexible Connector, Shown Connected to 5" End Suction Pump Discharge with 6050 FLANGE ADAPTER.



6" Wafer Butterfly Valve with 6040 FLANGE ADAPTER and 6" Triple Duty Valve with 6040 FLANGE ADAPTER, Shown with 4" In Line Pump.



**FLOW CONDITIONING CORP.**

WWW.FLOW-C.COM

12 KIMLER DRIVE MARYLAND HEIGHTS, MO 63043-3797 (314) 878-7898 FAX (314) 878-6029