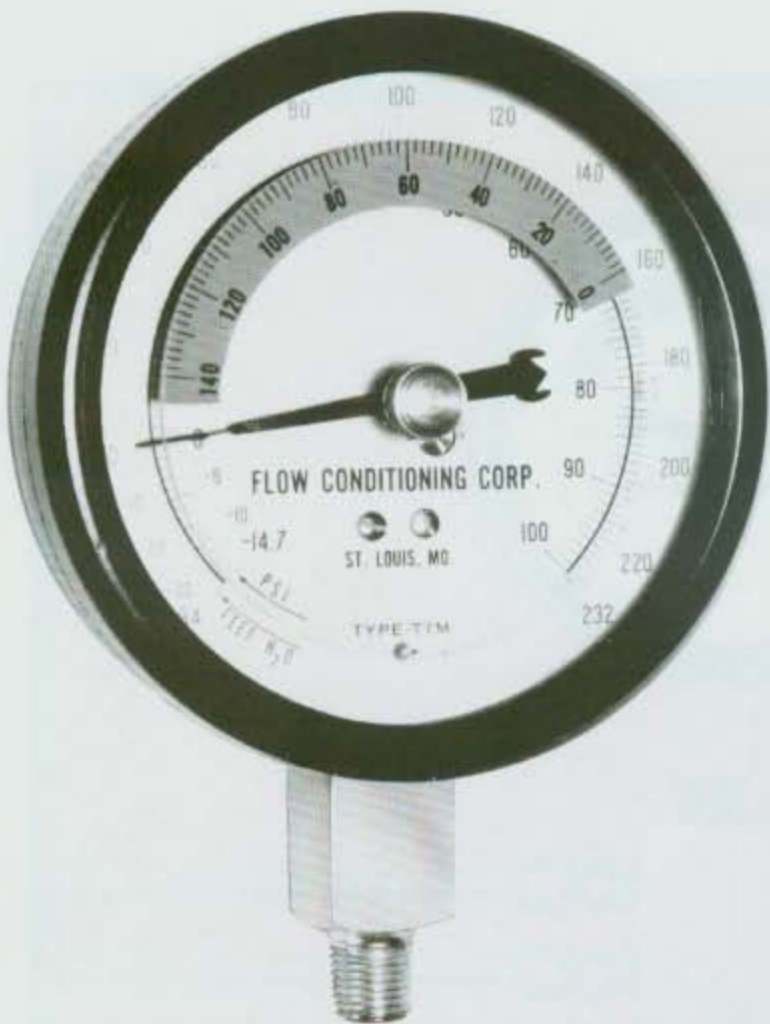


SYSTEM OF HYDRONIC INDICATION



FLOW CONDITIONING CORP.

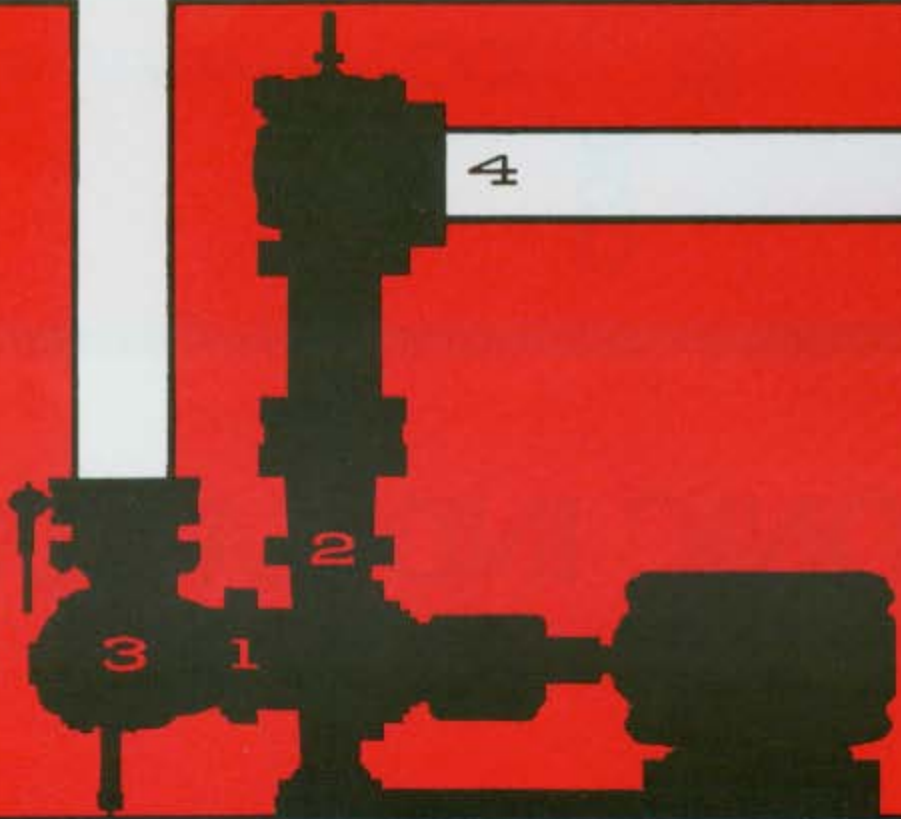


THE HYDRONIC INDICATOR

... WITH RANGES DESIGNED FOR HYDRONIC APPLICATIONS

Developed specifically for hydronic application, the Hydronic Indicator is designed to read pressures at the 1) pump suction, 2) pump discharge, 3) suction diffuser or strainer inlet, 4) downstream side of balance valve, 5) coil supply and return, 6) chiller supply and return, and 7) condenser supply and return.

The Hydronic Indicator System, of which the Indicator is an integral part, makes possible the exact determination of a system curve on any hydronic system.



THE HYDRONIC TRUMPET VALVE®

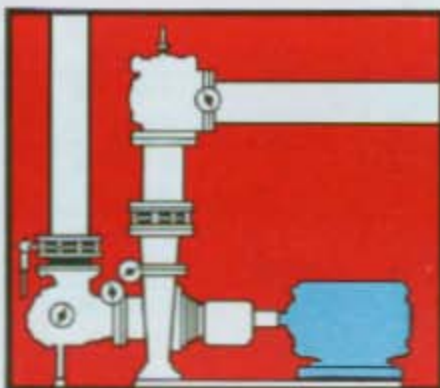
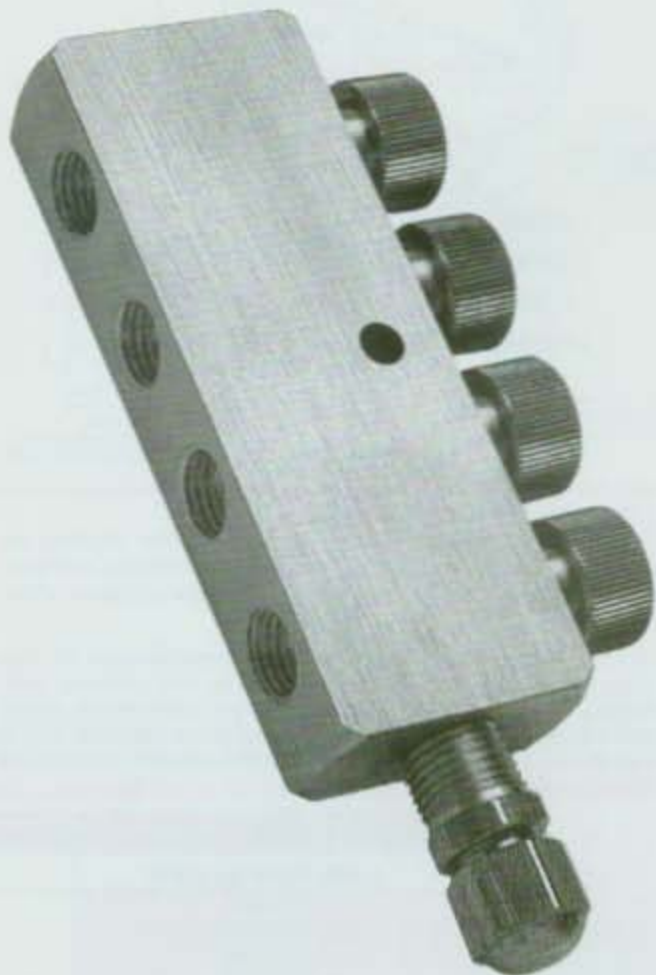
THE VALVE THAT BECOMES A MANIFOLD.

When introduced to the Hydronic system, the Hydronic Trumpet Valve®, actually becomes a manifold. The design of the Trumpet Valve® makes possible the joining of pressure points on any hydronic system. From here each reading is taken separately simply by pushing a button. Pulsation on the indicator is eliminated by this push-button design.

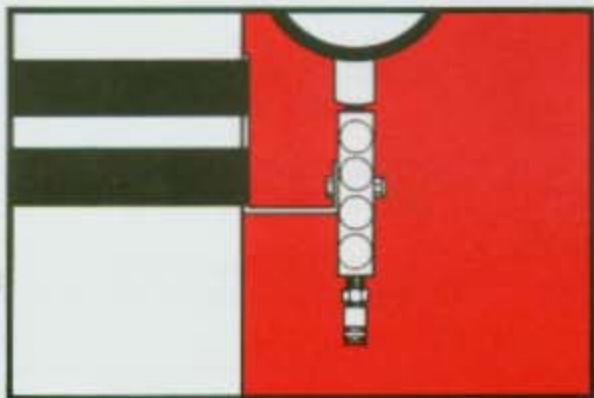
The Hydronic Trumpet Valve®, available in two to four individual valves, is of rugged one-piece brass construction with a built-in test port connection for calibration of the Hydronic Indicator.

The Hydronic Indicator, readable to one half foot, combined with the unique design features of the Trumpet Valve® becomes a system superior to all gauge installations.

- "O" Ring Seal
- Isolated from system temperature
- Rugged one-piece brass body

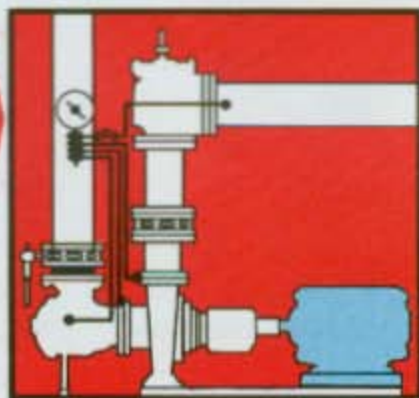


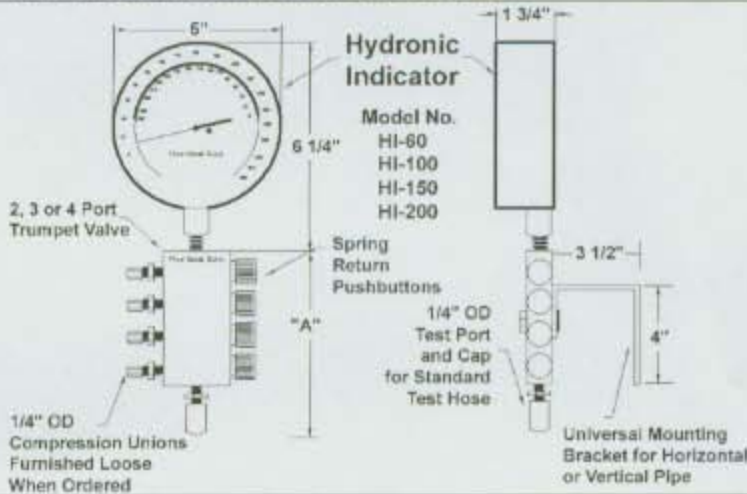
Prior to the Hydronic Indicator System, measuring pressures in a hydronic system for flow computation required a costly multiple gauge installation. The inaccuracy of these gauges caused evaluation to become guesswork.



The Hydronic Indicator System enables readings to be taken at all four pressure points on one precision indicator with ranges designed specifically for hydronic application. Accurate to within 1% of the dial range, the Hydronic Indicator System makes possible true flow computation on all hydronic systems.

Fast permanent mounting is accomplished by use of the mounting bracket and strap or by welding the bracket.





Job _____
 Engineer _____
 Contractor _____
 Order No. _____
 Submitted By _____ Date _____
 Approved By _____ Date _____

HYDRONIC INDICATION SYSTEM
SPECIFICATIONS

TYPICAL SPECIFICATIONS

Provide Flow Conditioning Corp. Hydronic Indication Systems as shown on plans. These systems shall consist of Hydronic Indicators and Trumpet Valves® to provide accurate pressure indications where necessary.

Hydronic Indicator shall meet ASA Grade A specifications for pressure gauges, accurate to 1%. Case shall be 4 1/2" diameter, stem mounted, heavy steel with screwed ring and unbreakable crystal. Indicator shall have recalibrator, compound scale calibrated both in pounds and feet from full vacuum to selected pressure, and quick-set dial for pressure comparison. Maximum indicator pressure shall at least equal pump shut

off head (when system pressure is at relief valve setting) and shall exceed this minimum by no more than 50 psi.

Trumpet Valve® shall be spring return pushbutton manifold of rugged brass construction with ports for connection to system at indicated points and with test port connection for gauge calibration.

Hydronic Indicator System shall be attached to system piping with heavy bracket at convenient height to permit easy pushbutton operation and dial observation.

COMPLETE HYDRONIC INDICATOR SYSTEM INCLUDES:

Trumpet Valve®, Hydronic Indicator, Mounting Bracket, and Test Port Connector

Tubing Connectors for Hydronic Indicators are Available at Additional Cost

Four Port System	Three Port System	Two Port System
TVI-460	TVI-360	TVI-260
TVI-4100	TVI-3100	TVI-2100
TVI-4150	TVI-3150	TVI-2150
TVI-4200	TVI-3200	TVI-2200

Trumpet Valve®

Model No.	Ports	Dimension "A"
TV-2	2	3 1/2"
TV-3	3	4 1/2"
TV-4	4	5 1/2"

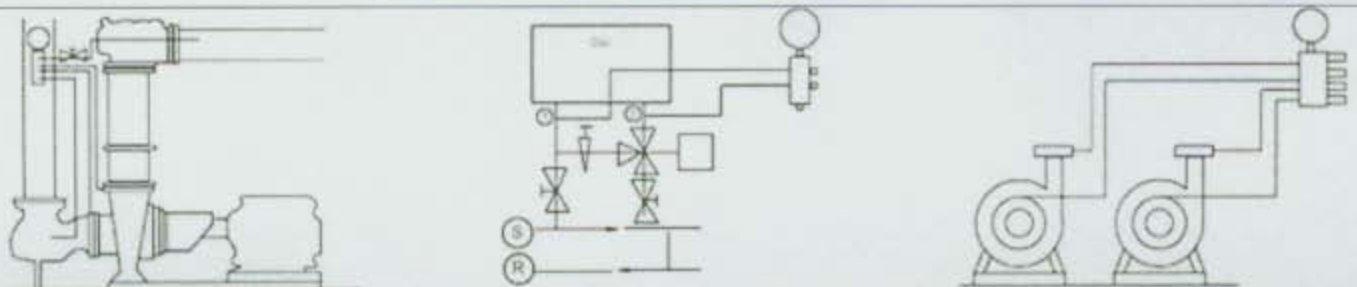
Other Flow Conditioning Corp. Products:

Double Suction Diffuser
 Sizes 10" x 10" Thru 20" x 24"

Flange Adapters
 Sizes 3" x 2 1/2" Thru 14" x 12"

Hydronic Indicator

Model No.	Pressure Range	Vacuum Range	Dial Markings	Numerals	Primary Divisions
HI-60	0-60 PSI	O-Minus 14.7 LBS.	Black	5 LBS.	1/2 PSI
	0-139 FT.	O-Minus 34 FT.	Red	20 FT.	2 FT.
HI-100	0-100 PSI	O-Minus 14.7 LBS.	Black	10 LBS.	1 PSI
	0-232 FT.	O-Minus 34 FT.	Red	20 FT.	2 FT.
HI-150	0-150 PSI	O-Minus 14.7 LBS.	Black	10 LBS.	1 PSI
	0-346 FT.	O-Minus 34 FT.	Red	20 FT.	2 FT.
HI-200	0-200 PSI	O-Minus 14.7 LBS.	Black	10 LBS.	1 PSI
	0-460 FT.	O-Minus 34 FT.	Red	20 FT.	2 FT.



FLOW CONDITIONING CORP.

WWW.FLOW-C.COM

12 KIMLER DRIVE MARYLAND HEIGHTS, MO 63043-3797 (314) 878-7898 FAX (314) 878-6029